



# New Faculty Orientation

## Welcome and Overview

Timothy M. Pinkston  
Vice Dean for Faculty Affairs

213-740-2671

[tpink@usc.edu](mailto:tpink@usc.edu)

August 18, 2022

# New and Recent Faculty Hires



## Assistant Professors

- Neda Maghsoodi, AME\*\*\*
- Thomas Petersen, CEE\*\*
- Souti Chattopadhyay, CS\*\*
- Lars Lindemann, CS\*\*\*
- Harsha Madhyastha, CS\*\*\*
- Oded Stein, CS\*\*\*
- Swabha Swayamdipta, CS\*\*
- Weihang Wang, CS\*\*
- Dani Yogatama, CS\*\*
- Yasser Khan, ECE-EP\*
- Mengjie Yu, ECE-EP\*
- Quntao Zhuang, ECE-EP\*\*
- Chris Lin Torng, ECE-S\*\*\*
- Zhenglu Li, MFD\*\*\*
- Yu-Tsun Shao, MFD\*\*\*

## (Visiting) Associate Professors

- Harsha Madhyastha, CS\*\*\*
- Feng Qian, ECE-S\*\*\*
- Giacomo Nannicini, ISE\*\*

## Professor

- Demetrios Christodoulides, ECE-S\*\*
- Jay Hyung Lee, MFD\*\*\*

## Lecturers

- Emma Singer, AME\*\*
- Saakar Byahut, AME\*\*
- Niloufar Izadinia, ISE\*\*\*

## Senior Lecturer

- Roxana Javid, CEE\*\*
- Marco Popa, CS\*\*
- Susan Schober, ECE-EP\*\*
- Reza Jafarkhani, ITP\*\*
- Maryam Majedi, ITP\*\*

## Research Assistant Professors

- Sifat Muin, CEE\*
- Bo-Tong Zheng, CEE\*
- Luis Garcia, CS (ISI)\*\*
- Filip Ilievski, CS (ISI)\*\*
- Yajie Zhao, CS (ICT)\*\*
- Zaijun Chen, ECE-EP\*\*
- Abigail Horn, ISE (ISI)\*\*

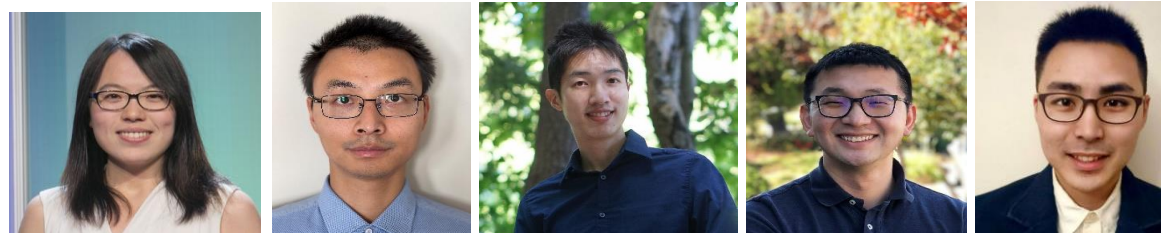
\* *Joined in Spring 2022*  
\*\* *Joined in Fall (or Summer) 2022*  
\*\*\* *Joins in Spring 2023*

# New and Recent T/TT Faculty Hires



## Assistant Professors

- Neda Maghsoodi, AME\*\*\*
- Thomas Petersen, CEE\*\*
- Souti Chattopadhyay, CS\*\*
- Lars Lindemann, CS\*\*\*
- Harsha Madhyastha, CS\*\*\*
- Oded Stein, CS\*\*\*
- Swabha Swayamdipta, CS\*\*
- Weihang Wang, CS\*\*
- Dani Yogatama, CS\*\*
- Yasser Khan, ECE-EP\*
- Mengjie Yu, ECE-EP\*
- Quntao Zhuang, ECE-EP\*\*
- Chris Lin Torng, ECE-S\*\*\*
- Zhenglu Li, MFD\*\*\*
- Yu-Tsun Shao, MFD\*\*\*



## (Visiting) Associate Professors

- Harsha Madhyastha, CS\*\*\*
- Feng Qian, ECE-S\*\*\*
- Giacomo Nannicini, ISE\*\*



## Professor

- Demetrios Christodoulides, ECE-S\*\*
- Jay Hyung Lee, MFD\*\*\*

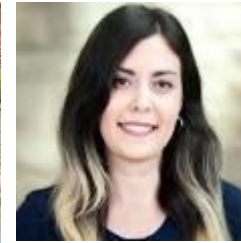
\* *Joined in Spring 2022*  
\*\* *Joined in Fall (or Summer) 2022*  
\*\*\* *Joins in Spring 2023*

# New and Recent RTPC Faculty Hires



## Lecturers

- Emma Singer, AME\*\*
- Saakar Byahut, AME\*\*
- Niloufar Izadinia, ISE\*\*\*



## Senior Lecturer

- Roxana Javid, CEE\*\*
- Marco Popa, CS\*\*
- Susan Schober, ECE-EP\*\*
- Reza Jafarkhani, ITP\*\*
- Maryam Majedi, ITP\*\*



## Research Assistant Professors

- Sifat Muin, CEE\*
- Bo-Tong Zheng, CEE\*
- Luis Garcia, CS (ISI)\*\*
- Filip Ilievski, CS (ISI)\*\*
- Yajie Zhao, CS (ICT)\*\*
- Zaijun Chen, ECE-EP\*\*
- Abigail Horn, ISE (ISI)\*\*



# USC at a Glance\*



## USC Academic Units (22)

- USC Dornsife College, Bovard College, USC Libraries, 19 Professional Schools

## USC Faculty (over 6,600 total)

- Approximately 4,600 full-time faculty: ~1,500 T/TT faculty; ~3,100 full-time Research, Teaching, Practice, and Clinical (RTPC) faculty
- Approximately 2,000 part-time faculty
- Over 150 elected fellows of prestigious societies (AAAS, AAAL, APS, ALI...)
- Over 50 affiliated faculty in National Academies (NAS, NAE, IOM)
- 10 National Medal award winners and 6 Nobel Laureates (current & past)

## USC Students (49,500 total)

- Approximately 21,000 undergrads; 28,500 grad & professional students
- Degrees awarded June 2020: 5,447 Bachelor's; 13,094 advanced
- More than 450,000 living alumni

## Annual Research Expenditures (FY'20-21) and Endowment (June 2021)

- Approximately \$955.6 million in sponsored research; \$8.1 billion in endowment



# Viterbi School at a Glance\*



## Viterbi Academic Units

- Dept's: AME, ASTE, BME, CEE (Astani), CHEMS (Mork), CS, ECE (Hsieh), ISE (Epstein)
- Academic Program Units (non-degree granting): EiS, ITP

## Viterbi Faculty

- Over 310 full-time faculty: ~189 T/TT; ~124 Research and Teaching (including Practice)
- > 100 elected fellows of prestigious societies (AAAI, ASME, ACM, BMES, IEEE, ...)
- > 100 NSF Career, Presidential Young Investigator, and/or PECASE Awardees\*\*
- ~ 120 endowed early/mid-career chairs, senior career chairs and professorships
- ~ 20 full-time (and 35 affiliated) faculty who are NAE members; 20 are NAI members

## Viterbi Students

- Approximately 9,227 total: ~2,923 undergrad; ~6,304 grad students (Fall'21)
- Over 88,000 alumni
- Typically in Top 10-12 Graduate Engineering Schools (U.S. News & World Report)

## Viterbi Annual Research Expenditures (~ 1/4<sup>th</sup> of USC's)

- Typically over ~\$213 million; more than 45 Research Centers and Institutes

# Viterbi Academic Programs\*



## Academic Programs

- 15 BS programs
- 20 active minors
  - 69 Master's programs
    - 41 Master's programs and 5 grad certificates on-line via DEN@Viterbi
- 13 Doctoral programs

## Education and Outside-the-Curriculum Efforts

- KIUEL (Klein Institute for Undergraduate Engineering Life)
- K-12 STEM Center (DEI outreach)
- Maseeh Entrepreneurship Prize Competition (MEPC)
- Min Family Engineering Social Entrepreneurship Challenge
- USC Viterbi Student Innovation Institute (VSI2) and Viterbi Startup Garage
- Student-led efforts (Rocket Propulsion Lab, USC Racing Team, ...)



# Useful USC Resources

## Policies and Faculty Portals

- Policies, Faculty Handbook, UCAPT Manual, strategic vision, & core doc's  
<http://policy.usc.edu>
- Faculty resources, governance, support, guides, calendars, news, events  
<http://faculty.usc.edu>
- Useful links and information (e.g., for new faculty (T/TT & RTPC), chairs, mentors)  
<https://employees.usc.edu/>

## Work Well Center

- <https://workwell.usc.edu/>

## Center for Excellence in Research (CER)

- Proposal writing workshops, proposal review, funding opportunities, ...  
<https://orif.usc.edu/cer/>

## Center for Excellence in Teaching (CET)

- Workshops, seminars, programs, and resources for teaching innovation  
<http://cet.usc.edu/>
- See the CET Faculty Teaching Institute: <http://cet.usc.edu/institutes/>





# Useful Viterbi Resources

## Viterbi Research Portal

- Funding opportunities, research centers/labs, other info for faculty  
<http://viterbischool.usc.edu/faculty/faculty-research-resources/>

## Viterbi Faculty Portal

- School policies, academic integrity, useful links, and other resources  
<https://viterbischool.usc.edu/faculty/>

## Viterbi Mentoring Program

- Mentorship of junior faculty
- WiSE Program
- Mentor-mentee and peer-mentoring luncheons sponsored by School
- Annual group mentoring sessions (Vice Dean for Faculty Affairs)
- NSF Career proposal internal review (Vice Dean for Research)
- Understand mentoring roles, responsibilities, benefits and expectations—identify your needs and set attainable goals  
<https://viterbischool.usc.edu/faculty/#Mentoring>

# Graduate Recruitment



## USC and Viterbi Ph.D. Fellowships and Awards

- Provost, Annenberg, Viterbi, Mork, Alfred Mann, Ming Hsieh, Chevron Fellowships
- Viterbi Supplemental, Merit Top-off, WiSE Top-off, GEM, Diversity Top-off Awards

<https://viterbigradadmission.usc.edu/doctoral/phddegrees/>

## On-Campus Student Recruitment Events

- Graduate Engineering Preview Day

<https://viterbigradadmission.usc.edu/events/mspreview/>

- REACH (Recruitment of Engineering Achievers) PhD Preview

<https://viterbigradadmission.usc.edu/reach/>

- Conversion Visitation Days each Spring (coordinated by departments)